

This tutorial is to help you learn how to add a realistic looking moon to any photo.

Without moon

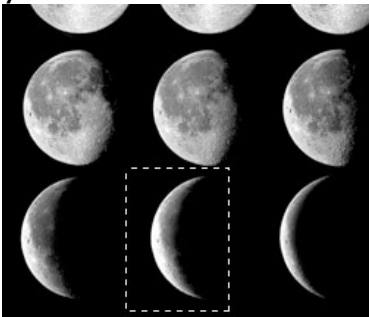


With moon



1. First of all you will need to get a photo with a realistic moon, I would recommend named Moon_Phases located on the server, it can also be downloaded at: jilt33.com/supernova/luna.html

2. Then select the Rectangular Marquee Tool and select the moon you would like to use.



3. Once you make the selection go to Edit and select Copy (Edit>Copy). Then open the photo you are working with and go to Edit and select Paste (Edit>Paste). If the moon looks too big in the new photo you will have to crop the moon photo on the left.

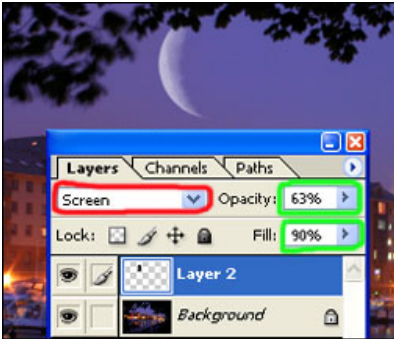
4. Then move the moon to where you would like it with the Move Tool.

5. Then your photo should look something like the image below. In order to get rid of the black here is what you do:



6. First of all change the Layer Blending Mode to Screen.

7. Then in order to make the moon look a little more realistic to this photo I lowered the opacity to 63% and the Fill to 90%. (I also masked out the top to make it look like it was behind the leaves)



In order to make the reflection on the water I just rotated it and did almost the same steps. The only thing different was that I lowered the Opacity and Fill quite a bit more.

